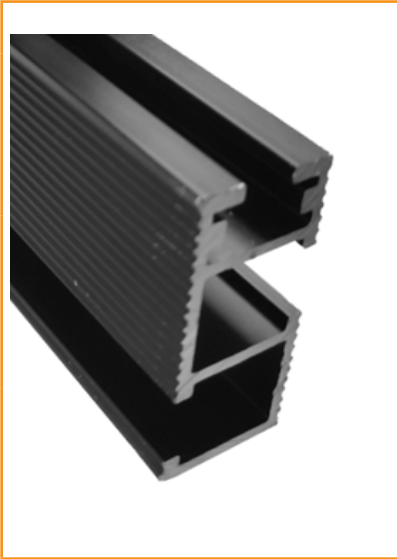
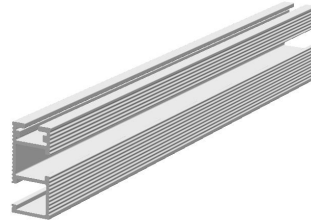


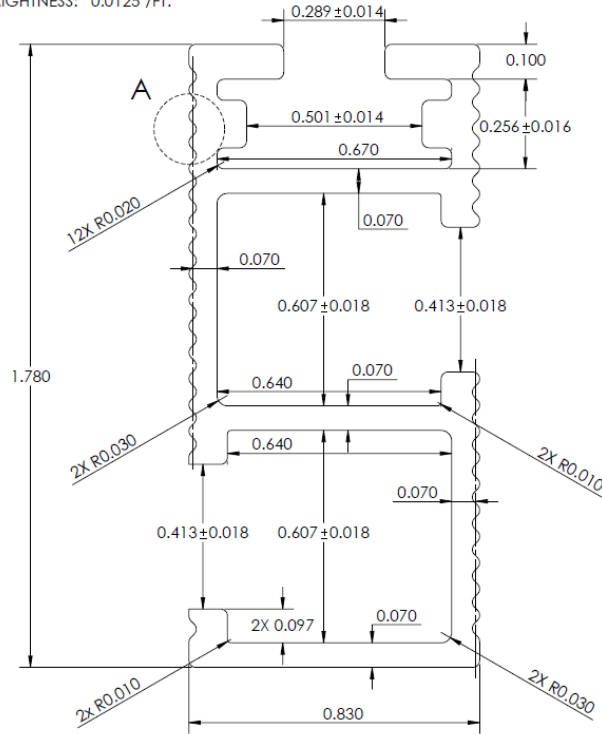
Standard Rail



Part #	Length	Finish
GR-R-STD-170-BLK	170	BLACK



- NOTES:
1. FINAL SURFACE TO BE SMOOTH AND FREE OF BURRS, NO SHARP EDGES
 2. OXIDE THICKNESS SHOULD BE 12 MICRONS OR ABOVE.
 3. INNER RADII TO BE 0.010 UNLESS OTHERWISE SPE
 4. ALL 6XXX SERIES AL GRADES WITH MINIMUM YIELD STRENGTH OF 35 KSI (240 MPA) ARE ACCEPT
 5. TOLERANCES: STANDARD
 6. TWIST: 0.5°/FT. 5° MAX
 7. STRAIGHTNESS: 0.0125"/FT.



Features:

- 6005 T5 Aluminum
- Available in Black Anodized
- Weight:

Length	Weight (lbs)
170	10.02